



Burma Conflict Update (April 22 - 30)

Violence Against Civilians

| | | | |
|-----------|-------------------------|------------|---------------------------|
| 51 | Civilians Killed | 36 | Civilians Arrested |
| 20 | Womens Killed | 367 | Houses Burnt Down |
| 3 | Childrens Killed | 88 | Aerial Assaults |

Civilian Casualties

Myanmar experienced significant air and artillery attacks that resulted in the tragic loss of 51 civilian lives, including 3 children and 20 women. Among the affected areas, Sagaing Region reported the highest number of casualties, with 19 deaths. Other regions and states also faced losses, including 10 deaths in Karenni State, 5 each in Bago and Mandalay Regions, 4 in Magway Region, 3 in Rakhine State, 2 each in Kachin State and Tanintharyi Region, and 1 in Southern Shan State. The majority of the deaths, 45, were caused by air and drone strikes, while 5 people lost their lives due to artillery fire.

Civilian's Houses Burnt Down

Troops from the Military Council caused significant destruction in Myanmar's Magway and Mandalay Regions by setting fire to a total of 367 homes. This included 230 homes in Magway Region and 137 homes in Mandalay Region.

Civilian Arrest

36 civilians were arrested across Myanmar. In Rakhine State, 30 individuals were detained, while in Sagaing Region, 6 were arrested.

Aerial Assaults Against Civilian Targets

The Military Council conducted 88 airstrikes across 11 states and regions in Myanmar. The breakdown includes 25 airstrikes in Karen State, 18 in Sagaing Region, 16 in Bago Region, 8 in Mandalay Region, 6 in Tanintharyi Region, 5 in Magway Region, 3 in Northern Shan State, 2 each in Chin State, Kachin State, and Karenni State, and 1 in Rakhine State.

Combatant Casualties

| | |
|------------|------------------------------|
| 280 | SAC's Soldiers Killed |
| 2 | PDF's Soldiers Killed |
| 62 | Military Engagements |

Combatant Engagements

Myanmar witnessed 62 major and minor clashes, including those involving drone strikes. Kachin State experienced the highest number of these incidents, with 12 clashes reported. Magway Region followed closely with 11 clashes, and Bago Division saw 10. Other areas affected included Tanintharyi Division with 6 clashes, Karen State and Mandalay Division with 5 each, Sagaing Division with 3,

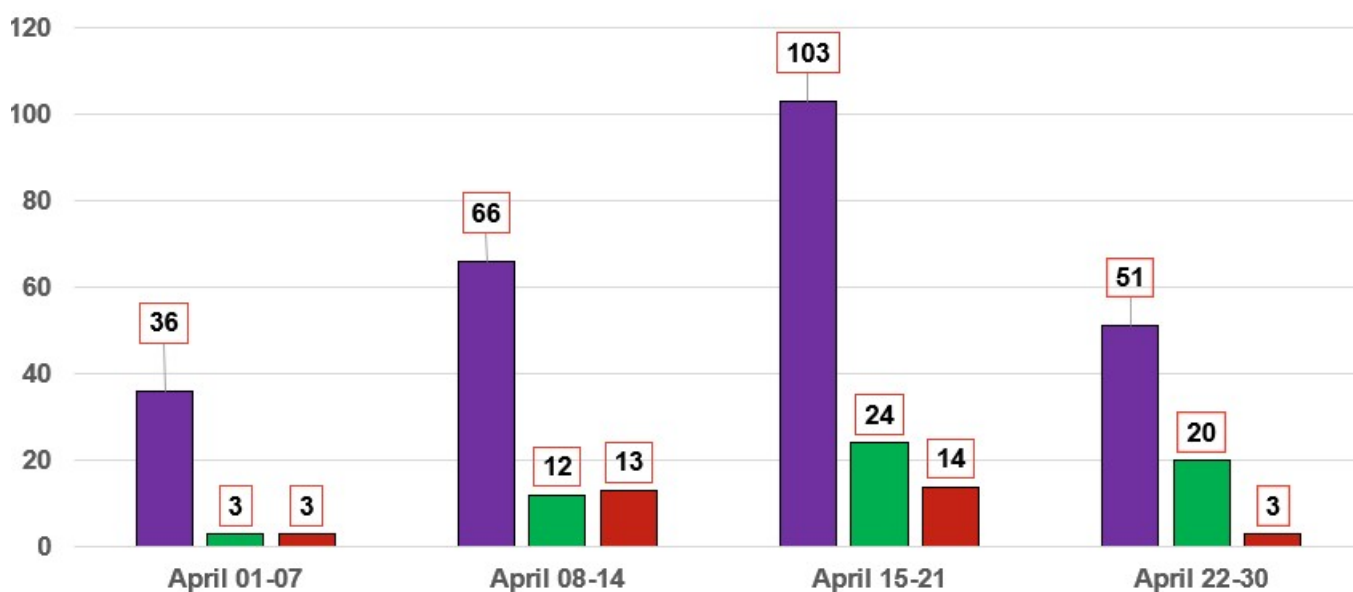
Southern Shan State with 2, and both Rakhine State and Northern Shan State with 1 each. Mon State also saw 1 clash, while Irrawaddy Division, Chin State, Karenni State, and Yangon Division reported no clashes.

In terms of casualties, two members of the Revolutionary Joint Force's People's Defense Force (PDF) were killed in the fighting, alongside 280 members of the military council.

All information provided is based on local news reports published between April 22th and 30th 2025.

Civilian, Women, and Children Deaths (Last 4 Weekss)

■ Total ■ Women ■ Children



Civilian, Women, and Children Deaths (Last 4 Months)

■ Total ■ Women ■ Children

120
100

Military Developments

Operation by KNLA and Joint Forces

On April 23, the combined forces of the Karen National Liberation Army (KNLA) and the People's Defense Force (PDF) successfully seized control of the Kuan Saik military base of the Military Council Army in Shwe Kyin Township, Bago Region.

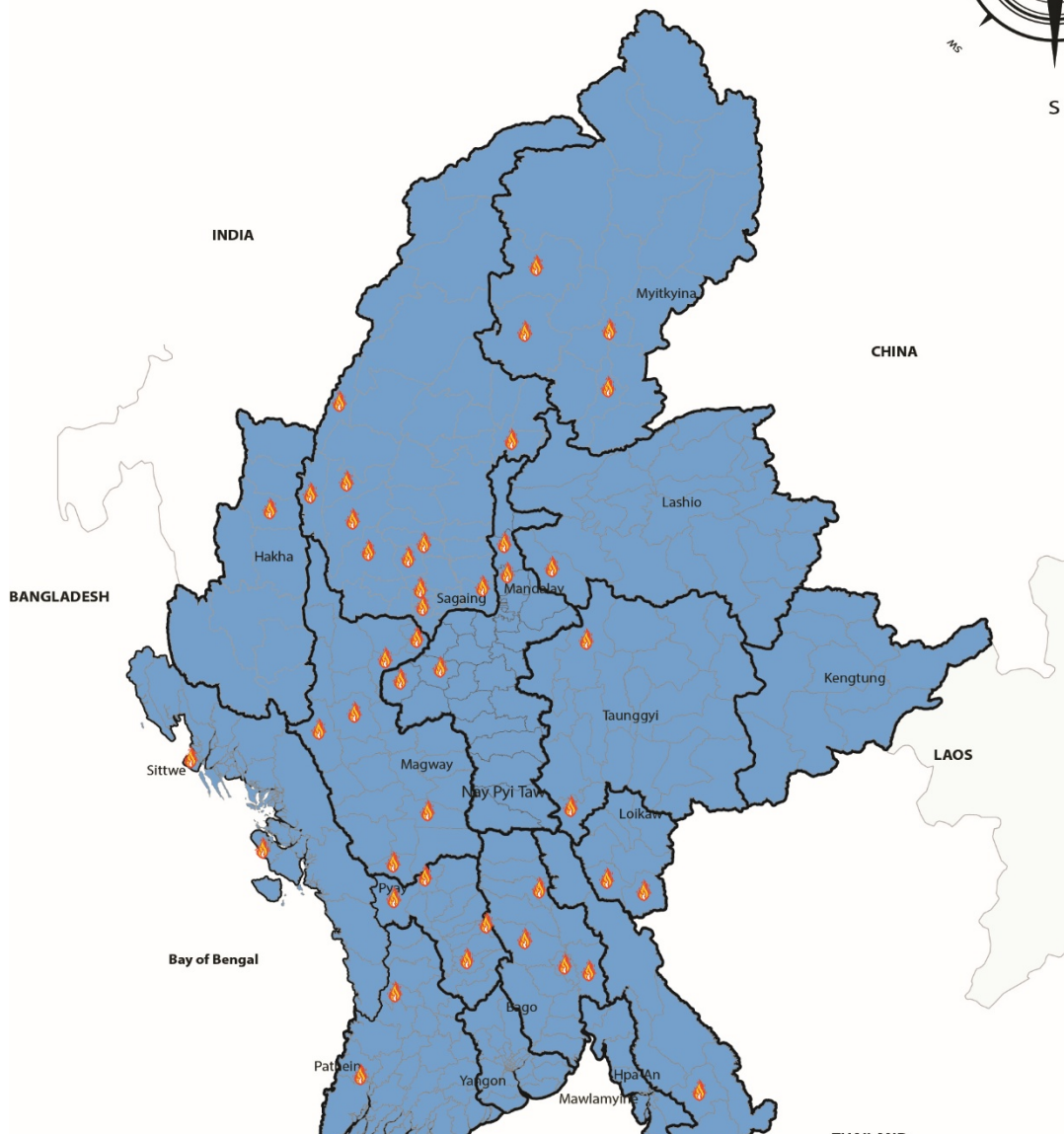
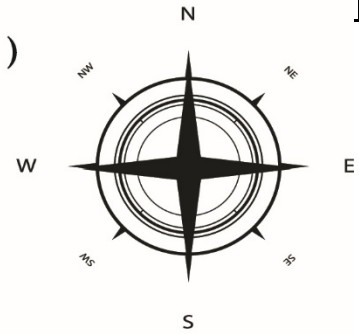
Political Developments

On April 22, the Military Council announced an extension of the temporary ceasefire period, prolonging it by one week from April 23 to April 30.

Conflict Data By Region

| Data of Myanmar Conflict 22-30, April 2025 | | | | | | | | |
|--|----------------------------------|------------|-----------------------|------------|-----------------|------------------|--------------------|--------------------|
| States | Clashes between SAC and PDF/EAOs | Air Strike | SAC's soldiers killed | PDF killed | Children killed | Civilians killed | Civilians arrested | Houses burned down |
| BAGO | 10 | 16 | 73 | | | 5 | | |
| CHIN | | 2 | | | | | | |
| KACHIN | 12 | 2 | | | | 2 | | |
| KARENNI | | 2 | | | 1 | 9 | | |
| KAREN | 5 | 25 | | | | | | |
| MAGWAY | 11 | 5 | 80 | 1 | | 4 | | 230 |
| MANDALAY | 5 | 8 | 9 | | | 5 | | 137 |
| MON | 1 | | 2 | | | | | |
| RAKHINE | 2 | 1 | 10 | | 1 | 2 | 30 | |
| SAGAING | 5 | 18 | 66 | | 1 | 18 | 6 | |
| SHAN (N) | 2 | 3 | | | | | | |
| SHAN (S) | 3 | | 3 | 1 | | 1 | | |
| TANINTHARYI | 6 | 6 | 37 | | | 2 | | |

Map of Myanmar Conflict (April 22-30, 2025)



Glossary

AAPP (Assistance Association for Political Prisoners)

A human rights organization tracking political prisoners in Myanmar and releasing updates on arrests and killings since the coup.

ABSFU (All Burma Federation of Student Unions)

An organization founded by Aung San at Rangoon University advocating for academic freedom, student rights, and democracy.

ACRP (Asian Conference of Religions for Peace)

A non-governmental organization promoting peace and disarmament issues, affiliated with the UN.

AA (Arakan Army)

An ethnic armed organization based in Rakhine State and the military wing of the United League of Arakan.

ARSA (Arakan Rohingya Salvation Army)

A Rohingya insurgent group active in northern Rakhine State, originally called Harakah al-Yaqin.

Aung San

The founder of Myanmar's Armed Forces, an independence hero, and the Father of the Nation of modern-day Myanmar.

Aung San Suu Kyi (ASSK)

A Nobel Laureate, democracy icon, and former leader of the National League for Democracy, currently imprisoned by the junta.

Burma Socialist Programme Party (BSPP)

The only legal party after the 1962 coup, dissolved in 1988, and a precursor to the National Unity Party.

CDM (Civil Disobedience Movement)

A movement initiated by healthcare workers and civil servants opposing the military regime after the 2021 coup.

CRPH (Committee Representing Pyidaungsu Hluttaw)

A body created by ousted parliament members and citizens rejecting the military government's legitimacy.

Gen Z Burma

A youth-led movement campaigning against the military junta.

GSCN (General Strike Committee of Nationalities)

A coalition coordinating anti-coup protests among opposition groups and ethnic forces.

Junta

A military or political group ruling a country after seizing power by force.

MEHL (Myanmar Economic Holdings Public Company Limited)

A conglomerate owned and operated by Myanmar's military.

MEC (Myanmar Economic Corporation)

Another conglomerate owned and managed by Myanmar's military was targeted by the CDM.

Min Aung Hlaing

The military commander-in-chief was internationally condemned for his role in military attacks on ethnic minorities.

Ministry of Communications, Posts, and Telegraphs

The junta-controlled ministry is responsible for restricting freedom of speech and press.

Myint Swe

A vice president who declared a state of emergency during the coup and transferred power to Min Aung Hlaing.

Myo Yan Naung Thein

A pro-democracy advocate, former NLD strategist, and ex-political prisoner.

NLD (National League for Democracy)

A liberal democratic political party was overthrown in the 2021 military coup after winning the 2020 elections.

NUG (National Unity Government)

An exiled government formed by the CRPH, composed of ousted MPs and ethnic leaders opposing the junta.

NUCC (National Unity Consultative Council)

A platform uniting forces for a federal democracy, including NLD members, CDM groups, and civil society organizations.

PDF (People's Defense Force)

The armed wing of the NUG defended civilians and was seen as a precursor to a Federal Union Army.

Rohingya

A stateless, persecuted ethnic group in Myanmar's Rakhine State, victims of genocide by the military.

SAC (State Administration Council)

The name of the military-appointed junta government.

SAC-M (Special Advisory Council for Myanmar)

An international group promoting human rights, democracy, and accountability in Myanmar.

Spring Revolution

A nationwide protest movement against the 2021 military coup.

Tatmadaw

The military forces of Myanmar, are regarded by many as a terrorist organization.

UEC (Union Election Commission)

The junta accused the government body overseeing elections of failing to prevent alleged voter fraud in 2020.

Union Solidarity and Development Party (USDP)

The military's proxy political party, which lost to the NLD in 2020.

UNHRC (United Nations Human Rights Council)

A global organization promoting and protecting human rights worldwide.

United Nations International Court of Justice (ICJ)

The judicial organ of the UN is tasked with preventing genocidal acts against the Rohingya.

22222

The massive general strike held on February 22, 2022, showed widespread discontent against the junta.

8888 (8/8/88)

The historic uprising on August 8, 1988, was organized against the military junta, inspiring later movements like the 22222 strike.

969 Movement

A Buddhist extremist nationalist movement opposing Islam in Myanmar and supporting the military.

Sources

The Irrawaddy, RFA, Ayeyarwaddy Times, D Day News, Myanmar Pressphoto Agency, Khit Thit Media, Narinjara, Mizzima, Myanmar Now, DVB, BBC, MeKong News, ThanLwin Times, PVTV, Khonumthung Burmese.



[BDWFG Website](#)

[Democratic Futures Project](#)

[UVA Global](#)

[Our Company](#) | [Contact Us](#) | [FAQs](#) | [Privacy Policy](#)